



PLUNGER BARS

Heath provides the utility industry with the most rugged and reliable tool you can find for all your underground probing needs. Heath Plunger Bars are specially designed to outperform all others. Heath Plunger Bars have a fitted piston rod for maximum safety and dependability, as well as a unique piston action for easy removal of the rod.

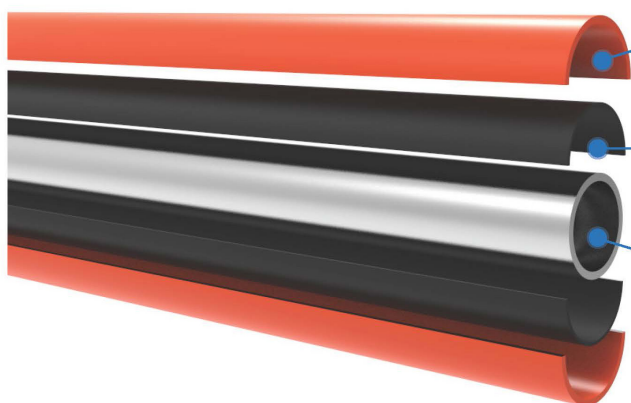
Ideal for all applications:

- ➔ Test holes - probe gas leaks
- ➔ Use for preliminary pinpointing
- ➔ Locate underground structures
- ➔ Sub-soil determination - tracing ledge, etc.
- ➔ Tree feeding - directly fertilize roots

Features:

- ➔ Tough, one-man probing tools that easily drive 1/2-in. holes to depths of up to 40 inches.
- ➔ Two models: Heavy Duty or Utility
- ➔ Plastic-coated handles are insulated and provides up to 10,000 volts shock resistance at the top 18" of handle. Laboratory tested.
- ➔ Tempered steel rods come in two sizes:
40" probe depth
52" probe depth
- ➔ Penetrate through even the most dense soil.

COATINGS



Plastisol Overcoating

Thick layer which provides high visibility and shock/vibration/damage protection.

Nylon Thermal Plastic

Thick layer which provides electrical insulation.

Steel Handle Assembly

Handles are rated against electrical shock protection of 10,000 volts.



Your Safety...Our Commitment
www.heathus.com



www.crwall.com 519-624-9293
customerservice@crwall.com

640 Bridge St W
Waterloo, Ontario
Canada
N2K 4M9

SPECIFICATIONS



Plastic-Coated Handle



Utility & Heavy-Duty Assembly Nut/Guide Plug



Replacement Utility & Heavy-Duty Rod



Utility & Heavy-Duty Plunger Bar



Utility & Heavy-Duty Anglefin (0.75" dia.) Plunger Bar

40" Probing Depth Complete Bars

Utility Straight	64" (162.6 cm); 10 lbs (4.5 kg)
Utility Anglefin	64" (162.6 cm); 13.6 lbs (5.9 kg)
Heavy Duty Straight	64" (162.6 cm); 13.5 lbs (6.2 kg)
Heavy Duty Anglefin	64" (162.6 cm); 16.6 lbs (7.6 kg)

Handles

Utility Straight	22.6" x 1.7 (57.4 x 4.3 cm); 6.2 lbs (2.8 kg)
Utility Anglefin	22.6" x 6.5" (57.4 x 16.51 cm); 9.8 lbs (4.4 kg)
Heavy Duty Straight	23.5" x 2.1" (59.7 x 5.3 cm); 8.9 lbs (4.1 kg)
Heavy Duty Anglefin	23.7" x 7.7" (60.2 x 19.5 cm); 12 lbs (5.4 kg)

52" Probing Depth Complete Bars

Heavy Duty Straight	76" (193 cm); 14.1 lbs. (6.4 kg)
Heavy Duty Anglefin	76" (193 cm); 17.2 lbs. (7.8 kg)

Rods

40" Utility Standard	59.5" x 0.5" (151 x 1.27 cm); 3.8 lbs (1.7 kg)
40" Heavy Duty	59.5" x 0.5" (151 x 1.27 cm); 4.6 lbs (2.0 kg)
52" Heavy Duty	71.5" x 0.5" (182 x 1.27 cm); 5.2 lbs (2.5 kg)

ORDERING DETAILS

Heath Part No.	Description	Heath Part No.	Description
1900474	Complete, heavy-duty, 40" rod, w/ball tip	1002-0	Replacement handle heavy-duty, anglefin
1900478	Complete, heavy-duty, 52" rod, w/ball tip	1014-0	Replacement handle utility model, anglefin
1900487	Complete, utility model, 40" rod, w/ball tip	1910472	Replacement rod heavy-duty, 40", with guide plug & ball tip
1000-4	Complete heavy-duty, 40" rod, ball tip, anglefin	1910473	Replacement rod heavy-duty, 52", with guide plug & ball tip
1000-5	Complete heavy-duty, 52" rod, ball tip, anglefin	1910489	Replacement rod utility model, 40", with guide plug & ball tip
1013-4	Complete utility model, 40" rod, ball tip, anglefin	1022-0	Threaded ball tip - replacement
1910468	Replacement handle, heavy-duty model	1910469	Guide plug (assembly nut), heavy-duty model
1910483	Replacement handle, utility model	1910482	Guide plug (assembly nut), utility model
		104314	Collar, shaft for rod depth adjustment

Heath Consultants Incorporated operates under a continual product improvement program and reserves the right to make improvements and/or changes without prior notification.



Your Safety...Our Commitment



www.crwall.com
519-624-9293