



Products, Solutions & Service for the Canadian Natural Gas Industry

Product Line Card



Honeywell

- EC 350 Electronic Volume Corrector
- TCI Temperature Compensating Index
- ER 350 Electronic Pressure Recorder
- MIWI 350 Wireless Telemetry, Wireless Pressure Monitoring & Remote Power Solutions
- Cloud Link Cellular IIOT Industrial Modem
- Smart Metering & Meter Data Collection Solutions



Honeywell

- RABO Rotary Meters
- QSonc / Sonic Series Ultrasonic Meters
- GT Series Turbine Meters
- Quantometer Wafer-style Turbine Meters
- Encal 3000 Gas Chromatograph





- Direct Acting & Pilot Operated Gas Regulators
- $\frac{3}{4}$ - 12" DN Sizes Available
- Up to 1000:1 Turndown Ratios on Medium to High Pressure Regulators
- Integral or Stand-Alone Slam Shut Valves
- Modularity Options for Additional Safety, Space Conscious Installs, Noise, etc.
- Filters

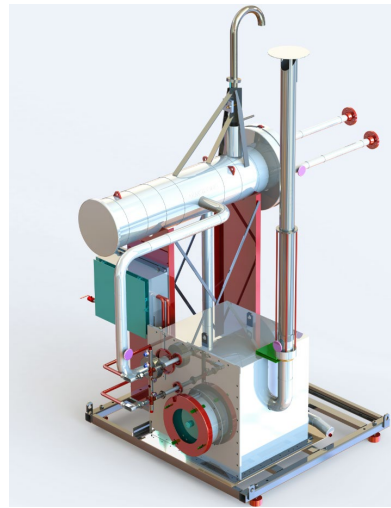


- FLOWSIC500 – Innovative 2-path Ultrasonic Meter - Alternative to Turbine & Rotary, Up to 35 MSCFH, 2 – 6"
- FLOWSIC600 – Multi-path Ultrasonic Meter
- 2 – 48"
- Measurement Canada Approved



ARMSTRONG

- Gas Preheating Solutions
- Modular Boiler Systems
- Vacuum Loop Boiler (VLB) Systems: 25 - 650 kWh
- Industry Leading Efficiency
- Field Scalable
- Prefab, Building / Skid-mounted Solutions



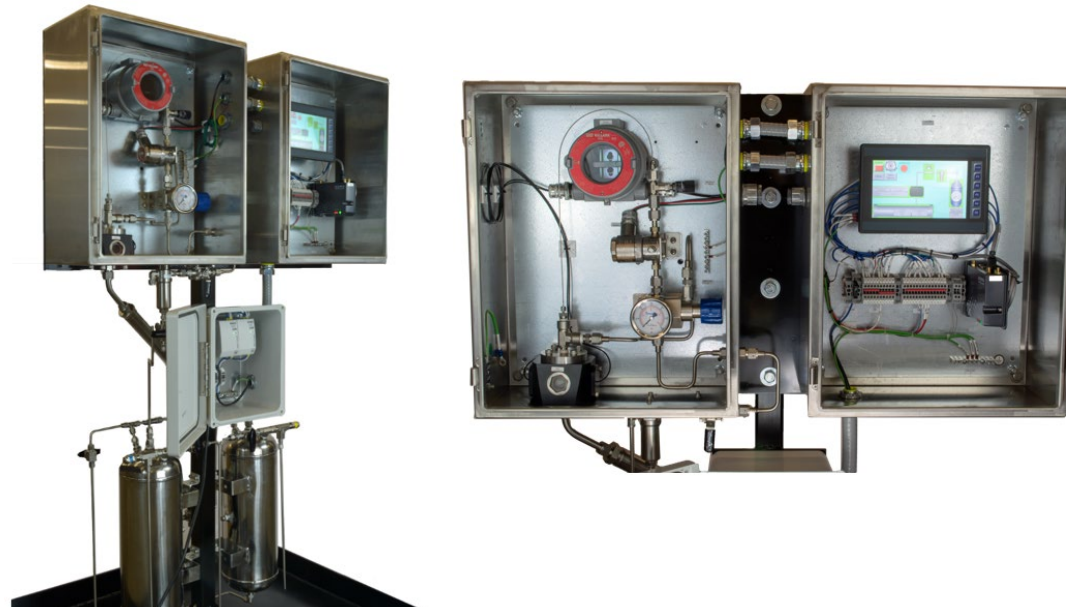
BRUEST CATALYTIC HEATERS

- Freez-Filter Fuel Gas Heater Low - Med Gas Volume
- Super Freez-Filter Pipeline Heaters (Hi P, Lo Flow)
- HotCat is the Ultimate in Efficient Pipeline Heating
- Freeze Protection for Meters & Valves, Regulators & Pilots
- CNG Let Down Systems





- GPL 750 Odorizer - Low/No Flow – 1.2 MMSCFH
- GPL 10000 – High Pressure & High-volume Injection Odorizer
- ***Innovative 'Scott Yoke' pump design –check it out here***
<https://youtu.be/J4GMltd9khU>





- Cast Iron Curb & Valve Boxes
- Plastic Curb & Valve Boxes
- CIP Combination Valve Boxes
- Cast Iron Roadway Test Boxes
- Cathodic Protection Test Stations
- Pipeline & Utility Markers

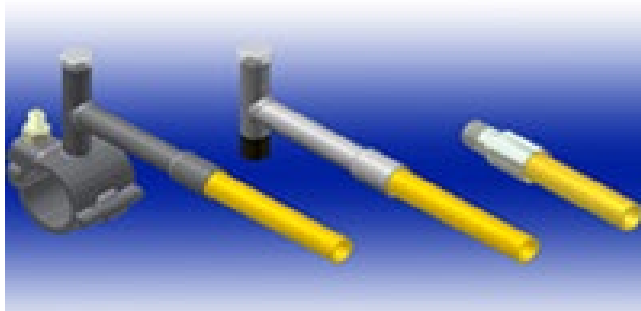


- Steel Ball Valves
- API 6D, ANSI 150 – 600, 2 – 36" Low Temp -40C, CRN & CSA
- Maintenance Free Ball Valves
- Polyethylene Ball Valves





- Compression Fittings
- Mechanical Saddles
- Steel Service Tees
- Couplings, Transition Fittings, etc.



- Locating/Construction Flag Insertion Tool
- All Util. Colours of Flags, Optional Company Logo
- Auto Insertion w/Paint Onboard
- ***Save 40% labour cost; reduces bending & injury***



Footage

- Manual Squeeze Off Tools
- Hydraulic Squeeze Off Tools
- Remote & Gear Operated Squeeze Off Tools
- Natural Gas Tapping Tool Kit
- 'Big Shot' Underground Piercing Tools



GasBreaker™

- Excess Flow Valves (EFV's)
- Stick or Integral with Steel/PE Tapping Tee
- Residential Service
- Commercial & Industrial Service



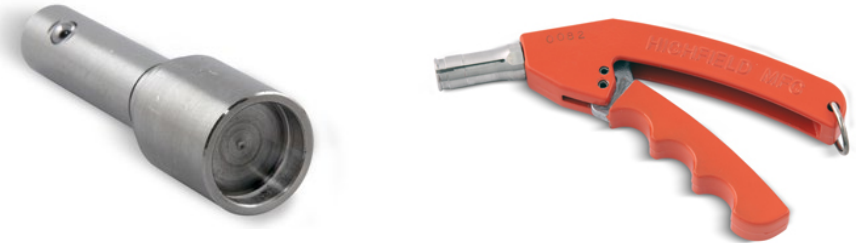
+GF+

- Risers
- Conventional Fusion Fittings MDPE/HDPE
- Electrofusion Equipment
- Electrofusion Fittings MDPE/HDPE
- Transition Fittings MDPE/HDPE
- Insulating Unions, Meter Swivels & Nuts
- Meter Sets - Prefabricated



highfield

- Locks, Guards, Plugs, Valve Protectors, etc.



Ionix

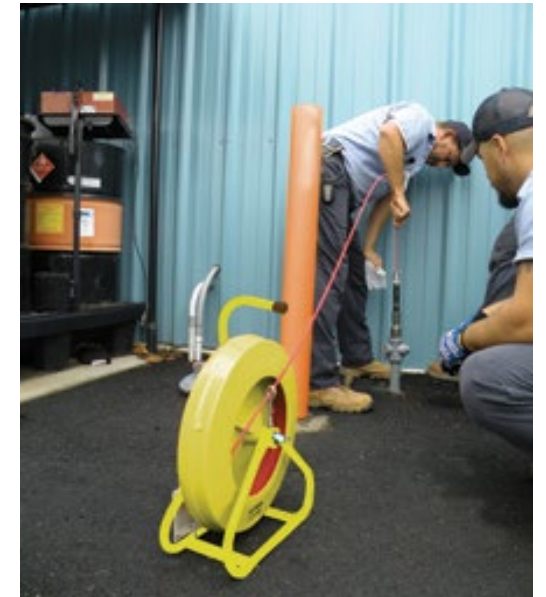
- PE Pipe Antistatic/Static Suppression
- IGT Aerosol Reach Tool
- IGT Aerosol Static Suppressor – Regular/Low Temp
- IGT Static Suppression Cartridges



JAMESON

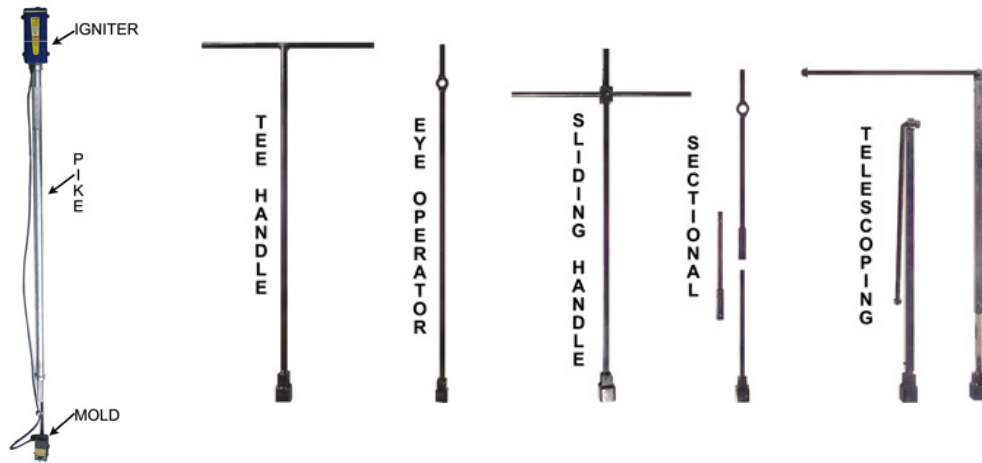
A SPARTACO COMPANY

- Tracer Wire - Live Gas Line Tracer Kits
- Gas Line Locating Kits
- Common Trench Tracer Spacers



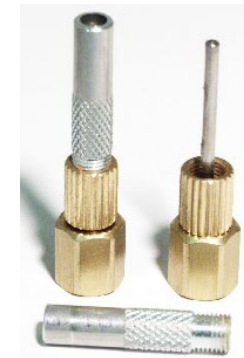


- Plug Valve Maintenance Tooling System
- Keyhole Tooling System
- Gate Valve Maintenance Tooling System
- Curb Box Keys, Curb Box Wrenches & Riser Tools
- Gate Valve Keys, Gate Valve Extension



Peterson Equipment

- Pressure & Temperature Reading Plugs
- Brass, SS Plugs
- Gauge Adaptors
- Test Kits
- **Canadian Master Distributor**





- Safety Marking Products
- Caution/Marking Tapes
- Utility Marking
- Safety Barrier Fence
- Marking Paint
- Whisker Markers
- Tracer Wire



- Brass Valves
- Meter Set Shut Off Valves
- Bypass Meter Set Valves





- Valve Lubricants, Cleaners & Flush for Gas Transmission & Distribution
- Lube Sealants; Emergency Lube Sealants
- Lubrication Equipment & Fittings
- Training & Service

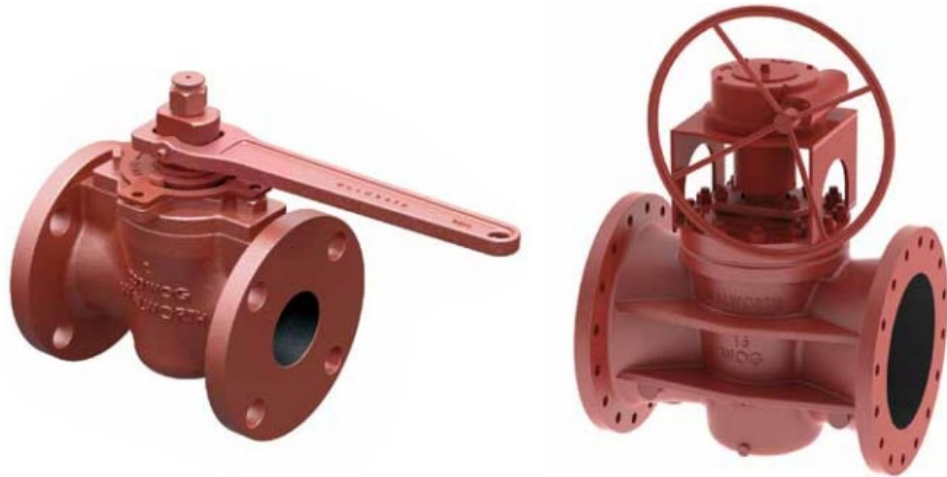


- Gas Leak Detection
- Personal Gas Detector
- Portable Gas Detectors
- Fixed Gas Detection
- Single; Multi-gas

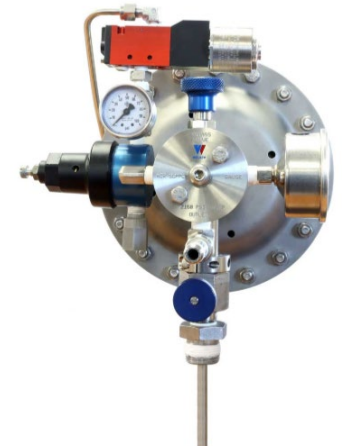




- Plug Valves
- CRN, -45°C option
- ANSI Class 150, 300, 600, 900, 1200 & 2500

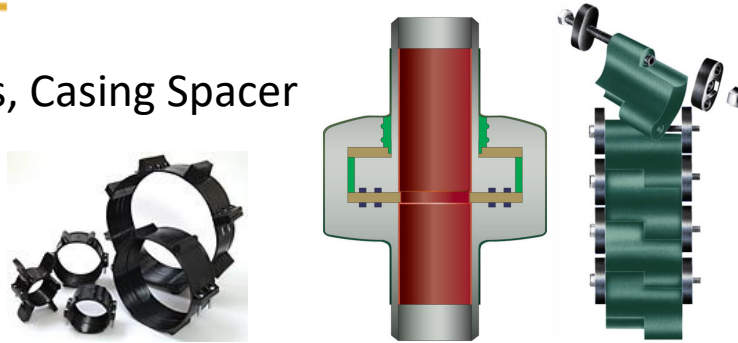


- Natural Gas Samplers
- Sample Conditioners & Probes
- HP Filter/Dryers, Dehydrators
- Oil Injection Pump Systems (turbine metering)



ADVANCE PRODUCTS & SYSTEMS INC.

- ISO Joints, Innerlynxs, Casing Spacer



EG EG PRODUCTS INC.

- Weather Caps, Socks, Vent Caps



CARSONITE® A valmont COMPANY

- Utility Marking Products



CURTISS- WRIGHT EST Group

- Pressure Testing Equipment & Plugs





- Pipe Supports, Clamps, Structural Steel Fabrications



- HDPE PE100
- MDPE PE2708 "PLUS" Pipe
- CSA B137.4 Certified



- DryConn Tracer Wire Connectors & Lugs



- ASME Code Pressure Filter Vessels
- Pipeline Coalescers
- Filter Elements





BUILDING TRUST



- Rockshield for Pipe/Coating Protection



- Bollards/Covers



- Repair Clamps, Service Saddles, Saddle Tees



- Debris Caps
- Non-Pop Lids



- Teflon Sealant Tape for Natural Gas



Calibration • Repair • Installation • Training

- Factory Authorized
- Measurement Canada Accredited
- Consulting:
 - Application Engineering
 - Program & System Design
 - Best Practices
 - Product Selection



TELEDYNE
GAS AND FLAME DETECTION
Everywhere you look™





CR Wall (Head Office)

55 Thompson Drive
Cambridge, ON, Canada
N1T 2E4

1.877.427.9255

customerservice@crwall.com

Western Sales & Distribution Office

#15, 6143-4th Street SE
Calgary, AB, Canada
T2H 2H9

1.877.255.3250

solutions@crwall.com

www.crwall.com